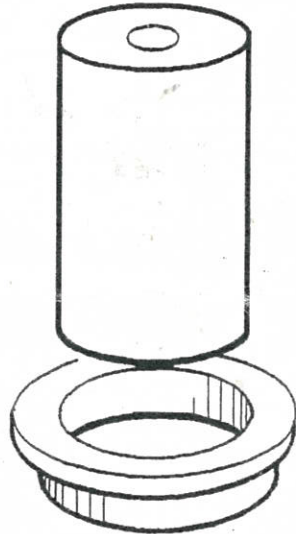


Centricast Ltd

**Universal  
Former Plug  
System C.290**



801-385

**ALEC TIRANTI LTD**

70 High Street, Theale, Reading RG7 5AR

(Tel: 0118 930 2775)

27 Warren Street, London W1T 5NB

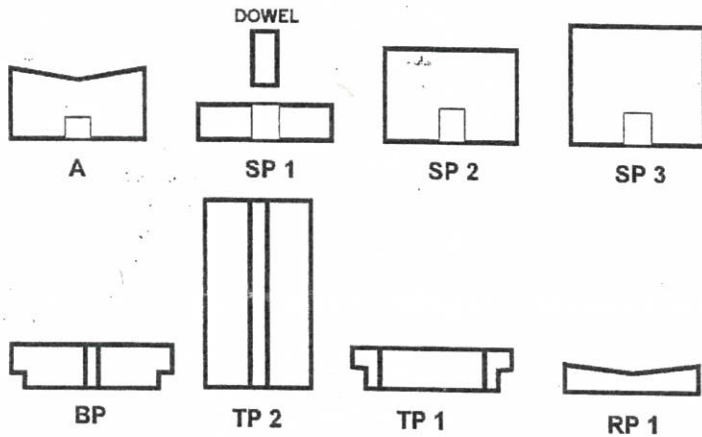
(Tel: 020 7636 8565)

# CENTRICAST LTD

## Universal Former Plug System

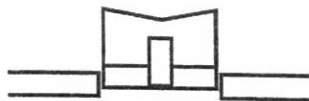
The plugs shown will cover mould depths between 3/4" - 2 1/2" total thickness. The *Universal Set* will cope with in between sizes too, because of the sliding *TP1/TP2* plug (shown clearly on front).

SP=Spacer Plug, TP=Top Plug, BP=Bottom Plug  
 RP=Reservoir Plug, ('A' doubles as a larger Reservoir Plug)



Universal Former Plug Set and Dowel

**Plug A** is the first plug used in making a Centricast mould, and it forms the floor of the reservoir; It is possible to extend the height of **Plug A** by using the spacer plugs **SP1**, **SP2** or



Plug A extended by using SP1 and the Dowel

**SP3** locating them with the dowel, as shown above. **Plug BP** forms the locating button on the bottom of the mould.

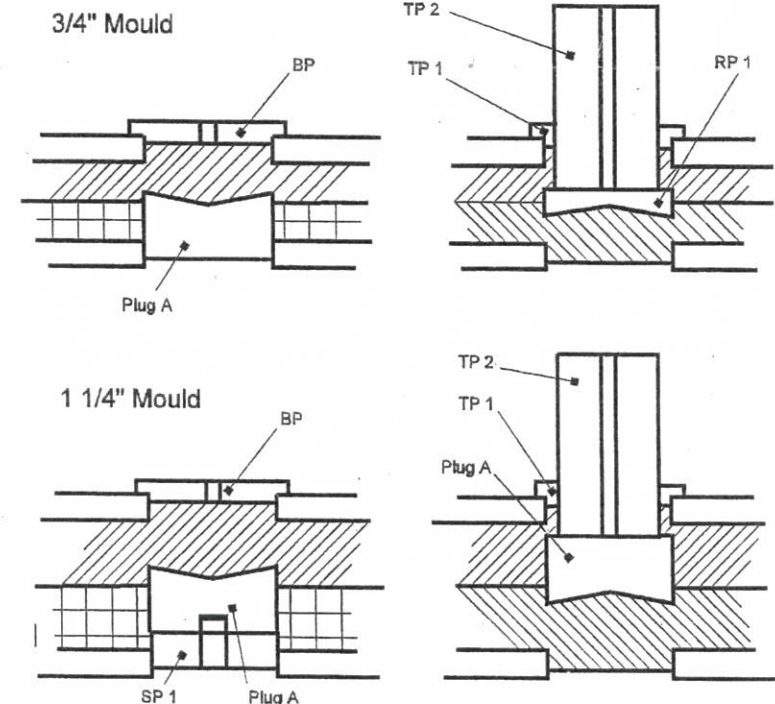
**Plugs TP1 / TP2** are used in combination, to produce the pouring hole; it is a push fit, and can be used on any size of mould, pushing down onto the reservoir plug **RP1** for 3/4" moulds, and **Plug A** for all other moulds. The following

table is a guide to which equipment is used to make which mould; this applies to 7" or 10" diameter sizes.

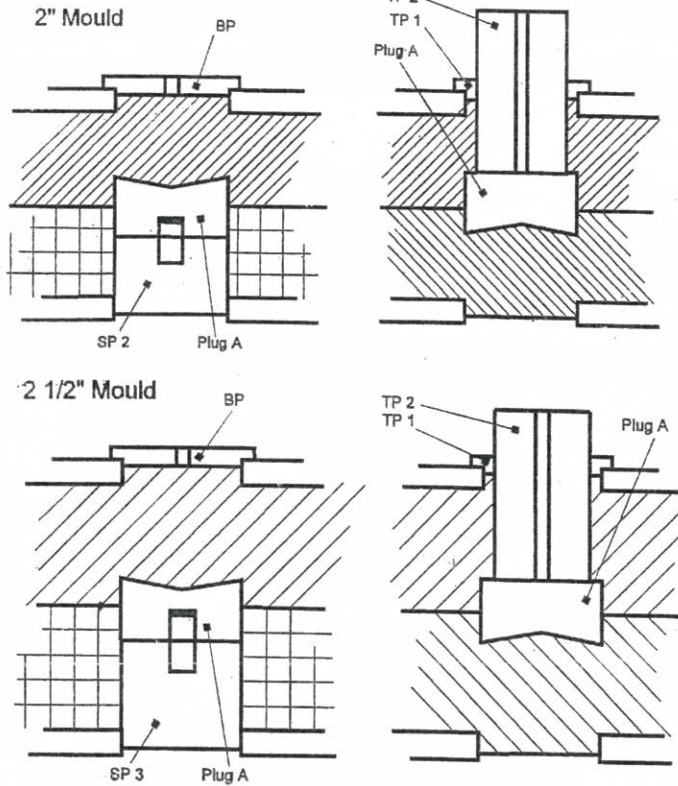
Mould	Rings	1st Mould	2nd Mould
3/4"	2 x 3/8"	Plug A	RP1 + C or RP1 + TP1/2
1.1/4"	2 x 5/8"	Plus A + SP1	Plug A + TP1/2
2"	2 x 3/8" 2 x 5/8"	Plug A + SP2	Plug A + TP1/2
2.1/2"	4 x 5/8"	Plug A + SP3	Plug A + TP1/2

The following illustrations show the plug arrangements in making the bottom half of the mould followed by the top half.

**First Half of Mould (bottom)**      **Second Half of Mould (top)**  
 (cross hatched area = Chavant Clay : hatched area = silicone rubber)



Diagrammatic explanation of equipment shown in the table



For your own special needs it is possible to mix the SP Plugs for intermediate mould sizes where you may need a greater depth for the top or bottom halves. For moulds over 2" in height, and where a special length of stud is needed, a 3 1/4" stud is available (C.252) which is threaded down one end for over 7/8"; this can be cut and tailored to suit the length you need.

- 801-385 C.290 Universal Plug System
- 801-400 C.248 'A' Stud set (3) for 3/4" Moulds with nuts
- 801-410 C.248 'A' Stud set (4) for 3/4" Moulds with nuts
- 801-420 C.249 'B' Stud set (3) for 1 1/4" Moulds with nuts
- 801-430 C.249 'B' Stud set (4) for 1 1/4" Moulds with nuts
- 801-440 C.250 'C' Stud set (3) for 2" Moulds with nuts
- 801-450 C.250 'C' Stud set (4) for 2" Moulds with nuts
- 801-460 C.252 'D' Stud set (3) for 2 1/2" Moulds with nuts
- 801-470 C.252 'D' Stud set (4) for 2 1/2" Moulds with nuts